

RELEASED

NOTES:

1) SEE MANUFACTURING SPECIFICATION MS0001 FOR ADDITIONAL INFORMATION E.G. FEATURE DIMENSIONS, WELDING INFO, ETC.

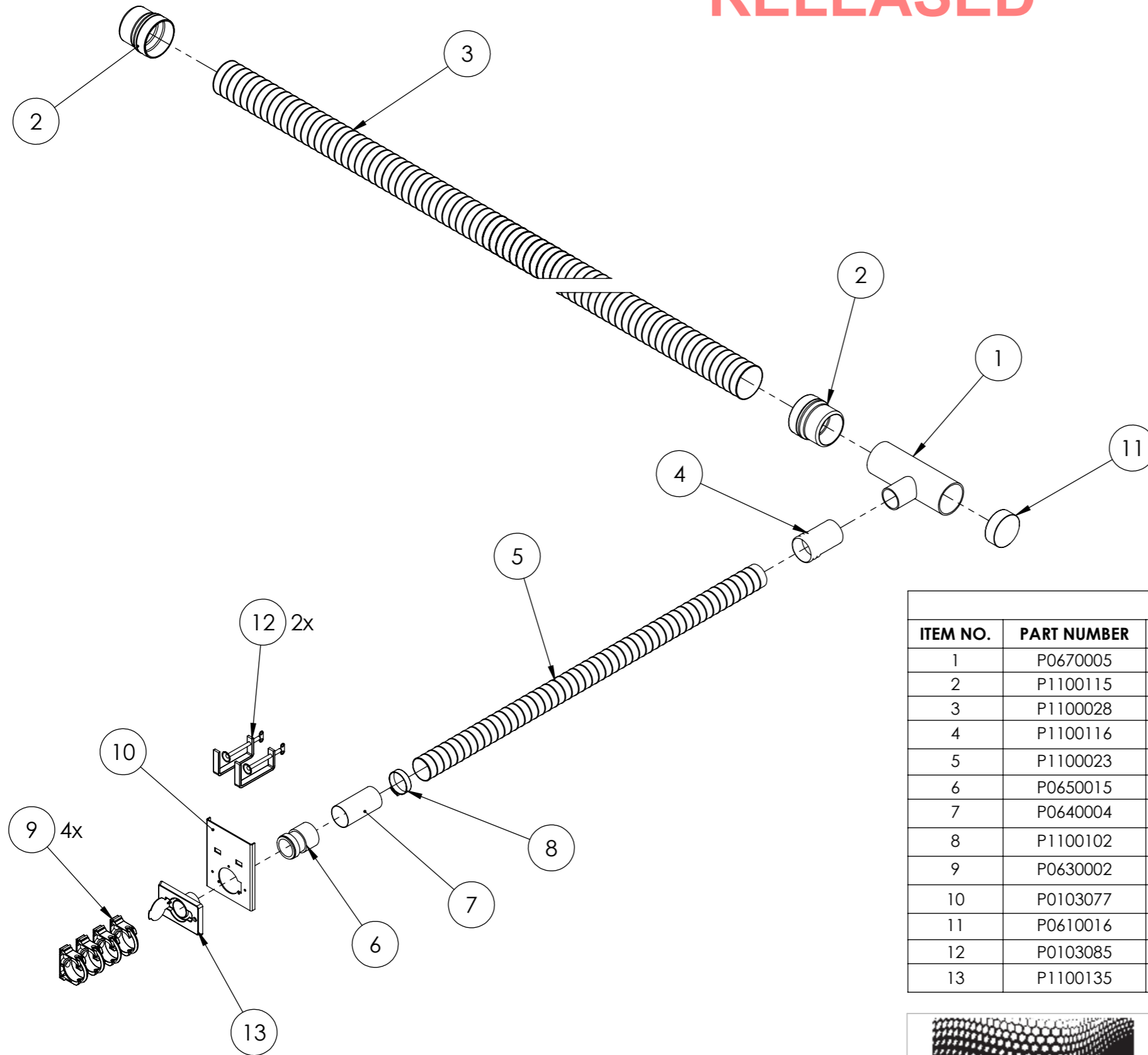
2) TOLERANCES WILL VARY ACCORDING TO FEATURE. SEE MANUFACTURING SPECIFICATION MS0001.

3) STEP FILES AND DXFs CAN BE SUPPLIED WHERE AVAILABLE. DRAWING IS MASTER AND DEFINES THE DIMENSIONAL REQUIREMENTS OF THE ITEM.

4) INTERNAL BEND RADII TO BE 0.8mm UNLESS OTHERWISE STATED.

5) PART NUMBER IS NOT THE SAME AS THE DRAWING NUMBER. SEE MS0001 FOR DETAILS.

6) ALL FOLDS TO BE 90° UNLESS OTHERWISE STATED.



BOFA BOM			
ITEM NO.	PART NUMBER	DESCRIPTION	QTY.
1	P0670005	75-50mm T HDPE BRANCH 91.5 (73712213)	1
2	P1100115	76mm Black PVC D/M Cuff PVC 7.85Sh	2
3	P1100028	75mm FLEX BLACK - UL94 V0 SPECIFICATION - 2500mm LENGTH	1
4	P1100116	Cuff Advantage 50mm	1
5	P1100023	Flexi 50mm UL94 V0 Specification - Black 1000mm LONG	1
6	P0650015	Black WP59 50-40mm Reducer Pushfit (79431352)	1
7	P0640004	Pipe - 50mm	1
8	P1100102	Ø50mm Jubilee Clip	1
9	P0630002	50mm Cobra Pipe Clip	4
10	P0103077	50mm TABLE BRACKET	1
11	P0610016	Cap Black for System 300E - 76mm Dia Cap Black	1
12	P0103085	CLAMP - PLATED ZINC CLEAR PASSIVE	2
13	P1100135	50mm inlet valve white	1

ECN	REV	CREATED BY	APPROVED BY	DATE	DETAILS
N/A.	05-A	R.B.	M.B-F.	03/10/2018	CLAMP PART NUMBER ADDED
N/A.	03	CC	CC	12/07/2016	FLEX LENGTHS REVISED
N/A.	02	CC	CC	20/06/2016	REPLACED YELLOW END CAP WITH P060016



THIS DOCUMENT IS THE PROPERTY OF BOFA INTERNATIONAL LTD. NO INFORMATION CONTAINED HEREIN MAY BE REPRODUCED OR DISCLOSED IN PART OR IN FULL WITHOUT THE EXPRESS WRITTEN CONSENT OF BOFA.

UNLESS OTHERWISE SPECIFIED:
 • ALL DIMENSIONS IN mm
 • DO NOT SCALE
 • WELD SYMBOLS ON DRAWING CONFORM TO ISO 2553 - SYSTEM A
 • DEBURR AND BREAK SHARP EDGES IF IN DOUBT ASK

Electronics Industry - 2x 75mm Flex with 75/50mm T Piece

ORIGINAL BY: Callum Courtney

DRG No: **A1020376**

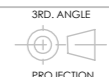
MAT'L: See Part Files

ISSUE NUMBER: 05-A

SHEET 1 OF 1

DATE OF ISSUE: 03/10/2018

SCALE: 1:10



SHEET SIZE: A3